



190-624-000 (1998)  
Auger Gear Assembly

Page 2 of 15

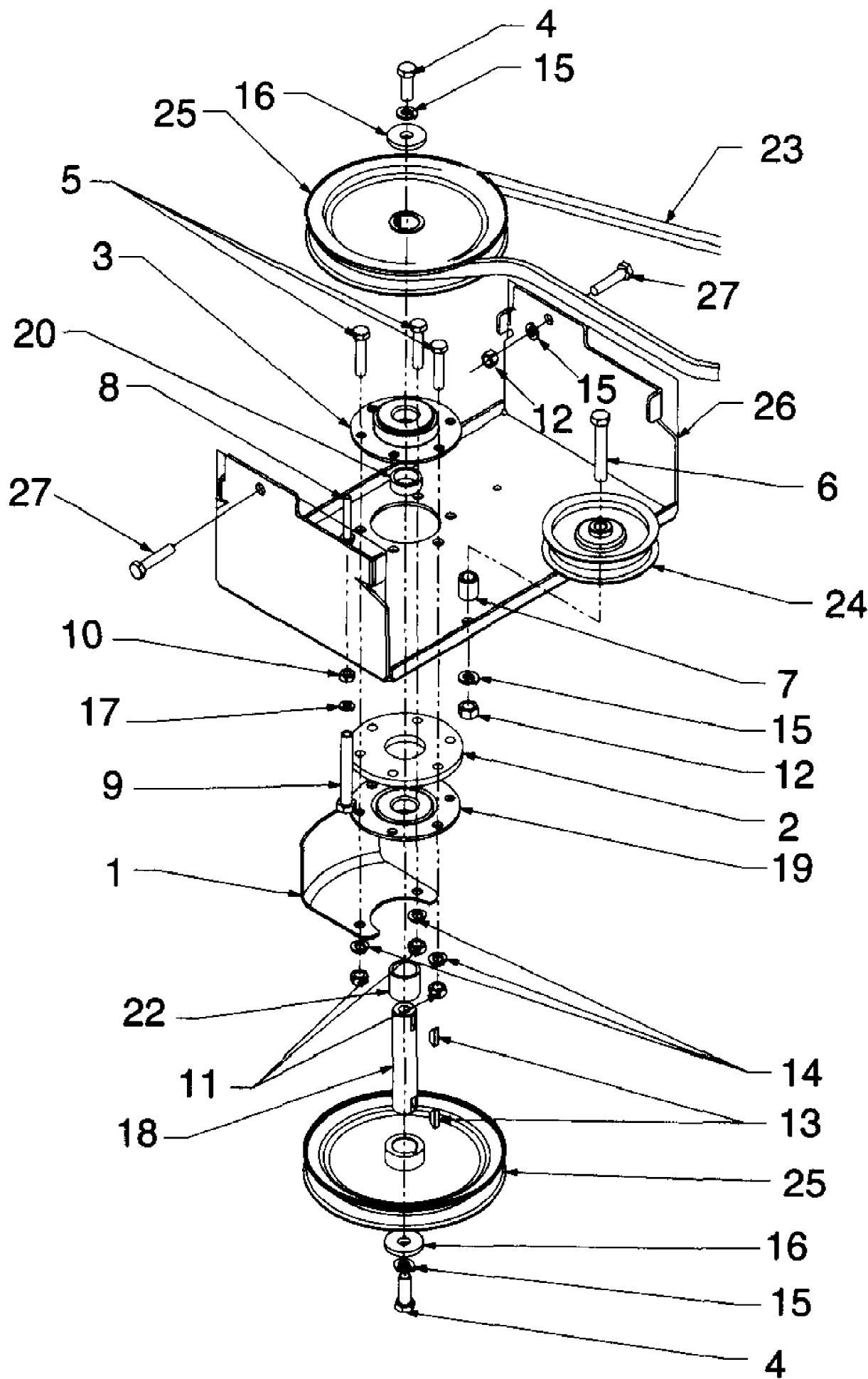
Ref #	Part Number	Qty	S/P/F	Description
1	618-0247	1	S	Auger Housing Ass'y, L.H.
2	618-0246	1	S	Auger Housing Ass'y, R.H.
3	710-1260	7	S	Scr. TT HxWash. 5/16-18:.75" Lg.
4	711-1097	1	S	Auger Input Shaft
5	714-0126	1	S	Key, Hi Pro 3/16 x 3/4 Dia.
6	714-0135	1	S	Key, Woodruff #91:1/4 x 3/4
7	716-0111	1	/P	Retaining Ring
8	717-0299	1	S	Worm Gear Double Thread LH
9	717-1425	1	S	Worm Gear LH
10	721-0325	1		Plug
11	721-0145	1	S	Oil Seal
?12	721-0328	.02		Sealant: Ultra Grey Loctite 5699 (Not Illustrated)
13	736-0291	3	S	Wash. Flat .88 I.D. x 1.380 O.D. x .125
14	736-0266	2	S	Wash. Fl. 1.52 I.D. x 2.0 O.D. x .30
?15	737-0300	.16	S	Grease, Benalene 920 (Not Illust.)
16	738-0275	1		Worm Gear Shaft
17	741-0217	2	S	Sleeve
18	741-0184	1		Thrust Bearing
19	721-0146	2	S	Oil Seal
20	741-0670	2		Flange Bearing
	618-0244	1	S	Auger Gear Ass'y. Complete



190-624-000 (1998)  
Blower Assembly

Page 4 of 15

Ref #	Part Number	Qty	S/P/F	Description
?1	784-5710	1	S	Pit:Supt.
2	741-0494	4		Bush:Fig:1.05 I.D. x 1.16 O.D.
3	741-0192	2		Brg:Flg:w/Flats
4	738-0492	1		Spiral Axle 1.00 X 44.12
5	736-0270	2	/P	Wash: Bell:.265 x .75 x .062
6	736-0250	4	/P	Fl. 1.00 I.D. x 1.75 O.D. X .1
7	715-0118	1	S	Spring Pin Spir 5/16 Dia. X 1.7
9	712-0429	3	S	Hx. Nut:: 5/16-18:Gr.C:Lock
10	712-0138	2	S	Hx. Nut:1/4-28:Gr.A
11	710-0604	6	S	Scr. TT Hx Ind Wash 5/16-18:.625 Lg
12	710-3038	1	/P	HHCS:5/16-18:.875:Gr.5:Std.
13	710-0891	2	/P	Shear Bolt 5/16 - 18 x 1-3/4
14	710-0412	2	/P	HHCS:1/4-28:.75:Gr.5:Std.
15	684-0073	1	/P	Sprl. Asm:LH:16"
16	684-0072	1	/P	Sprl. Asm: RH
17	684-0069	1		Impeller Ass'y:16"
18	618-0244	1	S	Gear Asm:Auger
19	05845B	2	S	Hsg:Brg:1.50 DBL-T
20	684-0068	1	S	Hsg Asm:Spr L:45"
21	710-0389	4	/P	Carriage Bolt 3/8-16 x .75
22	710-0451	12	/P	Bolt:Car:5/16-18:.75
23	710-0520	2	/P	HHCS:3/8-16:1.50:Gr.5:Std.
24	710-0726	1	/P	Scr:AB:5/16-12:0:.750: Hx Ind Wsh
25	710-3015	2	/P	HHCS:1/4-20:.75: Gr.5: Std.
26	710-3168	2	/P	Bolt:Carr:3/8-16
27	712-0130	8	/P	Nut: Hx.:3/8-16:Gr.C:Lock
28	712-0324	2	/P	Nut:Hx: 1/4-20:Gr.C:Lock
29	712-0429	12	S	Nut:Hx: 5/16-18:Gr.C:Lock
30	712-3010	4	S	Hx. Nut: 5/16-18:Gr.B
31	731-1696	1	S	Chute: Adap:6" Dia.
32	736-0105	6	/P	Wash:Spr:.401 x .870 x .063
33	736-0119	4	S	Wash:Lock: 5/16:Regular Duty
34	736-0242	1	/P	Wash: Belvl:.340 I.D. x .872 O.D.
35	784-5076	1	S	Gear Housg.Supp.Brkt
36	784-5696	1	S	Pit: Shave
37	784-5697	2		Shoe:Skid
38	784-5703	1	S	Brkt:Mt: Brg.
39	784-5711	1	S	Brkt:Chut:6.0
40	714-0135	1	S	Woodruff Key 1/4 x 3/4 Dia.
41	736-0242	6	/P	Wash. Bell .340 I.D. x .872 O.D.

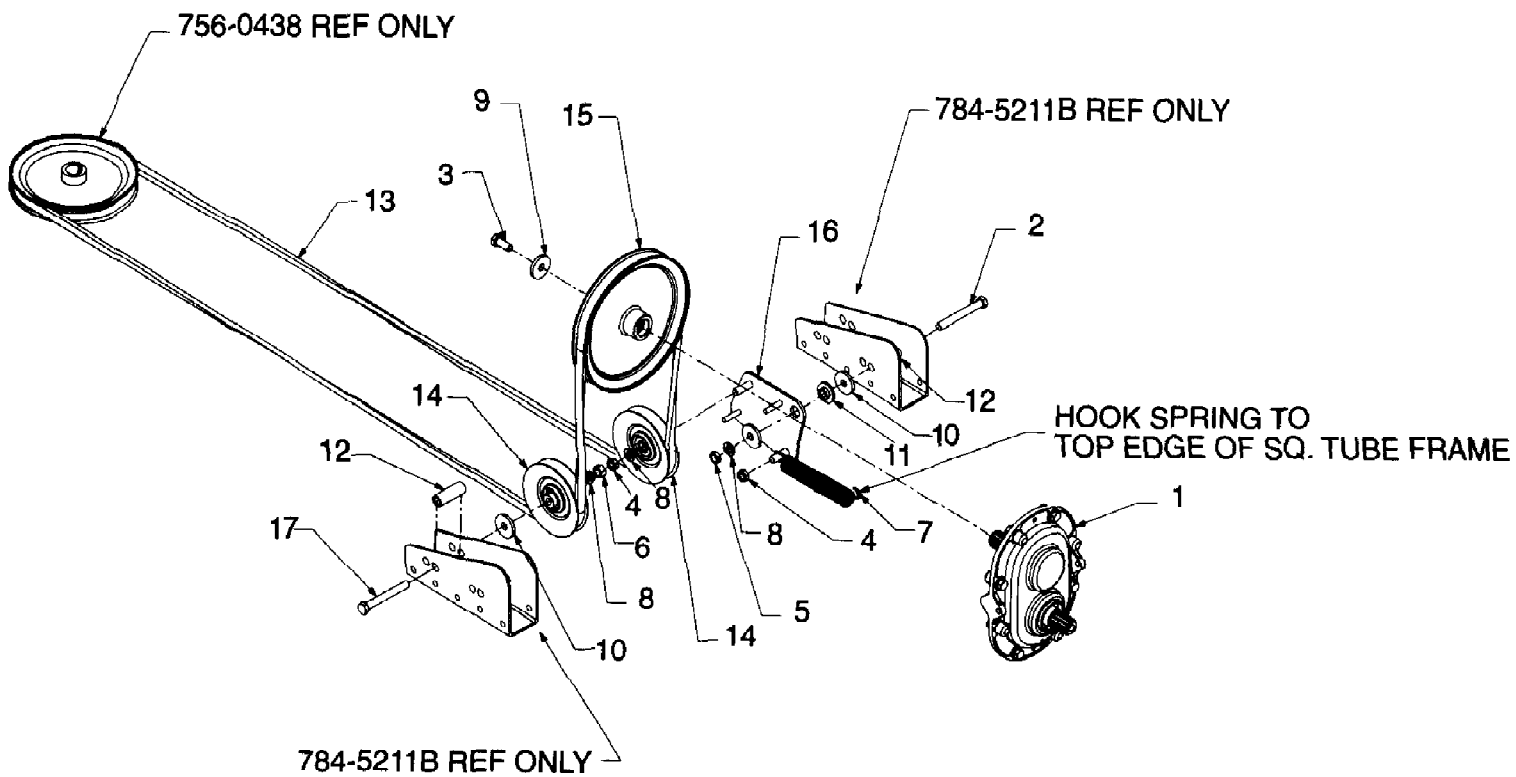


190-624-000 (1998)  
Carriage Assembly

Page 6 of 15

Ref #	Part Number	Qty	S/P/F	Description
1	05406	1	S	Belt Guard
2	14088B	1	S	Plt:Spdl:Spcr.
3	15297A	1	/P	Open Brg. Housing 1.85
4	710-0591	2	/P	HHCS:3/8-24:1.00:Gr.5:Lock
5	710-0624	3	/P	HHCS:5/16-24:1.50:Gr.5:Std.
6	710-3011	1	/P	HHCS:3/8-16:2.25:Gr.5:Std.
7	711-0396	1	/P	Spcr:.385 x .623 x .750 Lg.
8	711-0747	1	S	Pin:Gde:.250 Dia. x 1.68 Lg.
9	711-0793	1		Pin:Clevis:.375 Dia. x 2.63 Lg.
10	712-0107	1	S	Nut:Lock:1/4-20
11	712-0123	3	/P	Hx. Nut:5/16-24:Gr.A:
12	712-0798	3	/P	Hx. Nut:3/8-16:Gr. A
13	714-0161	2	S	Key:Hi-Pro 3/16 X 5/8
14	736-0119	3	S	Wash:Lock: 5/16:Regular Duty
15	736-0169	5	S	Wash:Lock:3/8:Regular Duty
16	736-0247	2	/P	Flat Washer .406 I.D. x 1 1/4 O.D.
17	736-0329	1	S	Wash:Lock:1/4:Regular Duty
18	738-0680	1	S	Shaft- .787 Dia. x 3.81 Lg.
19	741-0163A	1	/P	Hsg. Asm.:Bearing
20	750-0456	1	S	Spacer .790 I.D. x.347 Lg.
22	750-0660	1	S	Spacer .80 I.D. x 1.00 O.D. x .900
23	754-0229	1	S	Belt: V: 1/2 x 52.00 Lg.
24	756-0405	1	/P	FI-Idler w/ Flanges 3.75 O.D.
25	756-0438	2	S	Pulley:V Typ:6.50 O.D.
26	784-5146	1	S	Brkt: Carriage
27	710-0514	2	/P	HHCS. 3/8-16:1.00 Gr.5

190-624-000 (1998)  
Drive Assembly



190-624-000 (1998)  
Drive Assembly

Page 8 of 15

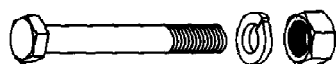
Ref #	Part Number	Qty	S/P/F	Description
1	684-0113	1	S	Box Asm:Spkt.
2	710-0521	1	/P	HHCS:3/8-16:3.00:Gr8:Std.
3	710-0696	1	/P	HHCS:3/8-24:.875:Gr8:Std.
4	712-0116	2	S	Nut:Jam:3/8-24:Ins Lock
5	712-0266	1	S	Hex Cent L-Jam Nut 3/8-16
6	712-3017	1	S	Hx. Nut:3/8-16:Gr B:
7	732-0491	1		Spring:Extn:.87 Dia. x 6.00 Lg. Hook spring to top edge of sq. tube frame
8	736-0169	3	S	Wash:Lock:3/8:Regular Dh
9	736-0235	1		Flat Wash..406 I.D. x 1.25 O.D.
10	736-0247	2	/P	Flat Wash..406 I.D. x 1 1/4 O.D.
11	738-0347	1	S	Shld Spacer .625 I.D. x .169
12	750-0668	2		Spacer .32 I.D. x .625 O.D. x 1.74
13	754-0458	1	S	Belt:V Typ:A Sect. x 126.0 Poly
14	756-0487	2	/P	V-Belt Idler-.38 I.D. x 4.0 Dia.
15	756-0496	1		Pulley:Dr.:7.00 Dia.
16	784-5200	1		Brkt Asm:Idlr.
17	710-3279	1		HHCS:3/8-16:4.25:Gr.5
756-0438	756-0438	1	S	Pulley Ref only
784-5211B	784-5211B	1	/P	Bracket-Idler Sup Ref only



(A)



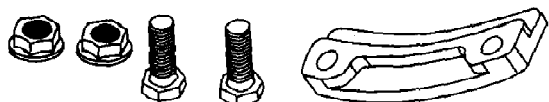
(B)



(C)



(D)



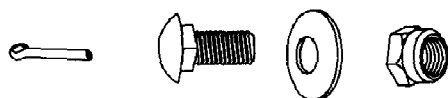
(E)



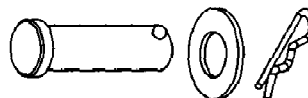
(F)



(G)



(H)



(I)



(J)



(K)



(L)



(M)



**Extra Shear Bolts (2)**

712-0429

710-0891



190-624-000 (1998)  
Hardware Pack

Page 10 of 15

Ref #	Part Number	Qty	S/P/F	Description
A	710-0514	4	/P	Hex Bolts 3/8-16:1.00" Lg. Attaching front frame ass'y and auger housing.
A	736-0169	4	S	Lock washer 3/8 I.D. Attaching front frame ass'y and auger housing.
B	710-0786	4	/P	Hex Cap Screw 1/2-13:4.00" Lg. Attaching rear frame rails and front frame ass'y.
B	736-0921	4	S	Lock Washer 1/2 I.D. Attaching rear frame rails and front frame ass'y.
B	712-0206	4	S	Hex Nut 1/2-13 Thd. Attaching rear frame rails and front frame ass'y.
B	784-5199	2	S	Bracket (Lift plate) (Not Pictured). Attaching rear frame rails and front frame ass'y.
C	710-0514	2	/P	Hex Bolt 3/8-16 x 1" Lg. Attaching the carriage assembly.
C	736-0169	2	S	Lock Washer 3/8 I.D. Attaching the carriage assembly.
C	712-3017	2	S	Hex Nuts 3/8-16 Thd. Attaching the carriage assembly.
D	731-0851A	3	/P	Chute Flange Keepers Attaching the chute assembly.
D	710-3015	6	/P	Hex Bolt 1/4-20:.75" Lg. Attaching the chute assembly.
D	712-3027	6	S	Hex Flange Nut 1/4-20 Thd. Attaching the chute assembly.
E	712-0130	2	/P	Hex Nut 3/8-16 Thd. Attaching the chute crank support tube.
E	710-0520	2	/P	Hex Bolt 3/8-16: 1.50 Lg. Attaching the chute crank support tube.
F	710-0262	2	/P	Carriage bolt 5/16-18: 1.5" Lg. Attaching the chute tilt handle.
F	712-3004A	2	/P	Hex Flg. Lock Nut 5/16-18 Thd. Attaching the chute tilt handle.
F	725-0157	1	/P	Cable tie 3/16 x .05 x 7.4" Lg. Attaching the chute tilt handle.
G	714-0507	1	S	Cotter pin 3/32 x .75" Lg. Attaching the chute crank.
G	710-0451	2	/P	Carriage Bolt 5/16-18:.75 Lg. Attaching the chute crank.
G	736-0242	2	/P	Bell Washer .340 I.D x .872 O.D. Attaching the chute crank.
G	712-0429	2	S	Lock Nut, Nylon 5/16-18 Thd. Attaching the chute crank.

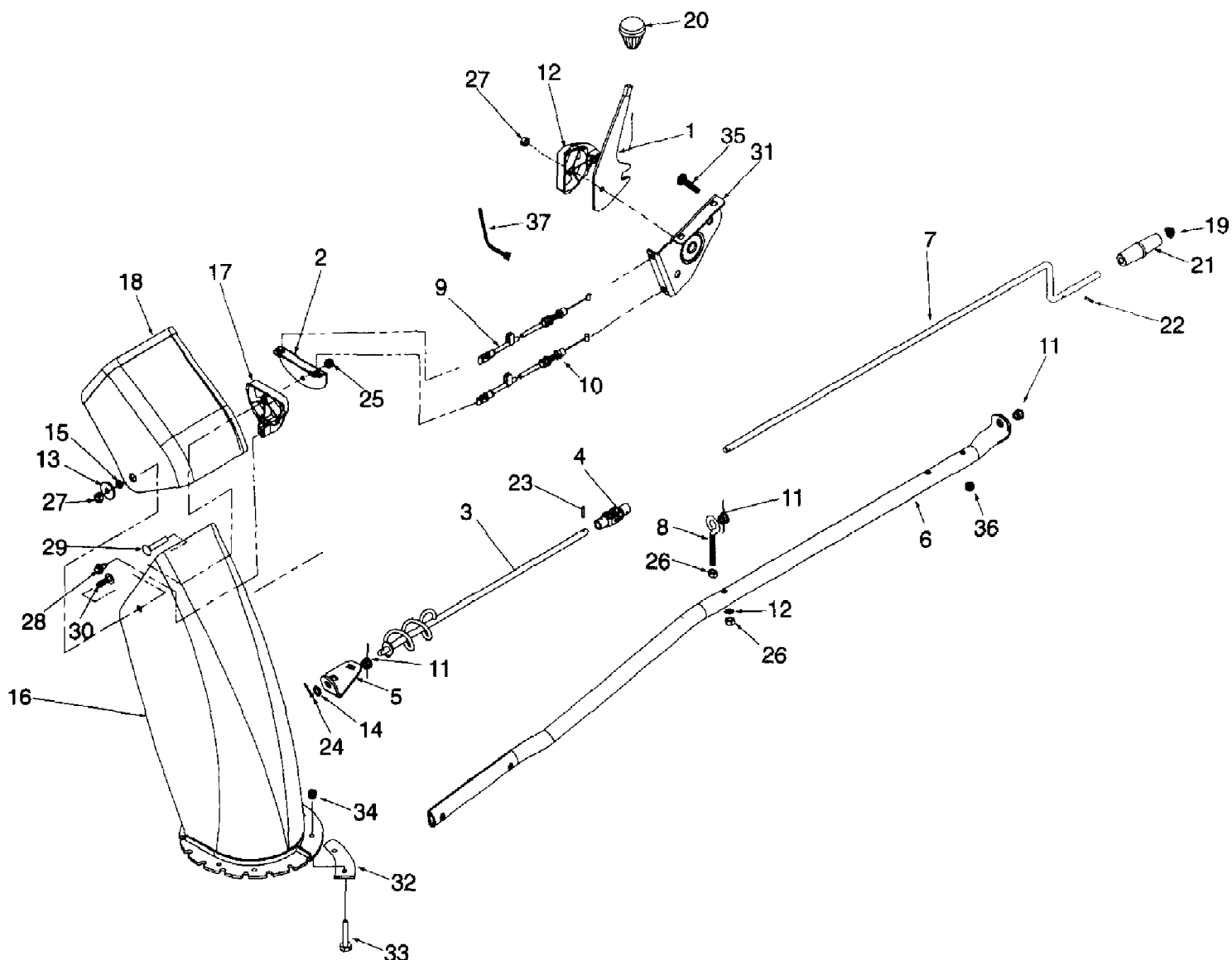
Ref #	Part Number	Qty	S/P/F	Description
H	711-0231	2	S	Clevis pin 1/2 x 1.59" Lg. Attaching the rear frame sections to the rear hanger brackets. Attaching bracket to snow thrower attachment frame.
H	736-0272	2	S	Flat Washer 1/2 I.D. Attaching the rear frame sections to the rear hanger brackets. Attaching bracket to snow thrower attachment frame.
H	714-0101	2	S	Hair Pin .08 x 1.42" Lg. Attaching the rear frame sections to the rear hanger brackets. Attaching bracket to snow thrower attachment frame.
I	711-0332	2	S	Clevis Pin .50 Dia. x .78" Lg. Attaching the adjustable lift links to the brackets.
I	736-0272	2	S	Flat Washer 1/2" I.D. Attaching the adjustable lift links to the brackets.
I	714-0101	2	S	Hair Pin .08 x 1.42" Lg. Attaching the adjustable lift links to the brackets.
J	710-0959	2	/P	Hex Bolt 5/16-18:1.50" Lg. Attaching helper springs.
J	736-0242	2	/P	Bell Washer .340 I.D. x .872 O.D. Attaching helper springs.
K	714-0147	4		Hair Pin .125 x 1.75 Lg. Attaching the Guide Bracket
L	710-0514	2	/P	Hex bolt 3/8-16: 1.00 Lg. Attaching The Rear Hanger Brackets To Tractor Frame.
L	736-0169	2	S	Lock washer 3/8 I.D. Attaching The Rear Hanger Brackets To Tractor Frame.
L	712-3017	2	S	Hex nut 3/8-16 Thd. Attaching The Rear Hanger Brackets To Tractor Frame.
M	710-0959	2	/P	Hex Bolts 5/16-18:1.50 Lg. Attaching Helper Springs To Tractor
M	736-0231	2	S	Flat Washer .344 I.D.x 1.125 O.D. Attaching Helper Springs To Tractor
M	712-3010	4	S	Hex Nut 5/16-18 Thd. Attaching Helper Springs To Tractor
712-0429	712-0429	2	S	Lock nut, Nylon 5/15-18 Thd. Extra Shear Bolts
710-0891	710-0891	2	/P	Shear Bolt Extra Shear Bolts



190-624-000 (1998)  
Sub Frame

Page 13 of 15

Ref #	Part Number	Qty	S/P/F	Description
1	17304	2		Lift Asm:Deck Link:Front
2	684-0110	1	S	Brkt Asm:Hsg.
3	703-2869	1	S	Cvr:Belt
4	703-2870	1		Brkt:Cvr:Belt
5	710-0182	2	/P	HHCS:1/2-13:3.00:GR5:Std.
6	710-0514	6	/P	HHCS:3/8-16:1.00:GR5:Std.
7	710-0521	6	/P	HHCS:3/8-16:3.00:GR8:Std.
8	710-0607	4	/P	Scr. TT 5/16-16:.50 HxIndWsh.
9	710-0653	4	/P	Scr:TT:1/4-20:.375:HxIndWsh.
10	710-0786	4	/P	HHCS:1/2-13:4.00:Gr5:Std.
11	710-0959	2	/P	HHCS:5/16-18:1.50:Gr5:Spec.
12	710-3073	2	S	HHCS:5/16-18: 2.50:Gr5:Std.
13	711-0231	2	S	Pin:Clv:.50 Dia. x 1.59 Lg.
14	711-0332	2	S	Pin:Clv:.50 Dia. x .78 Lg.
15	711-0509	2		Ins:Spring
16	712-0206	6	S	Nut:1/2-13:GrA:Hx
17	712-3010	4	S	Nut:5/16-18:GrB:Hx
18	712-3017	8	S	Nut:3/8-16:GrB:Hx
19	714-0101	4	S	Pin:Cot:Int .08 x 1.42
20	714-0147	4		Pin:Cot:.125 x 1.75 Internal
21	732-0813	2		Spr:Extn:1.25 O.D. x 7.25
22	736-0119	2	S	Wash:Lock:5/16: Regular Duty
23	736-0169	12	S	Wash:Lock:3/8:Regular Duty
24	736-0231	2	S	Wash:Fl:.344 I.D. x 1.125 O.D.
25	736-0242	2	/P	Wash:Belvl:.340 I.D. X .872 O.D.
26	736-0272	4	S	Wash:Fl:.510 X 1.00 X .060
27	736-0921	6	S	Wash:Lock:1/2:Regular Duty
28	750-1057	2		Tube:Lift:2.0 x 2.0 x 42.0 Lg.
29	750-1059	2		Tube:Lift:1.0 x 2.0 x 43.0 Lg.
30	784-5148A	1	S	Guide Bracket Assy.
31	784-5199	2	S	Brkt:Lift Plate
?32	784-5203	1	S	Brkt:Hngr:RR LH
33	784-5204	1		Brkt:Hngr:RR RH
34	784-5211B	2	/P	Brkt:Idlr:Supt.
35	784-5686	2	S	Brkt:Spr:Mt.



190-624-000 (1998)  
Upper Chute And Chute Controls

Page 15 of 15

Ref #	Part Number	Qty	S/P/F	Description
1	784-5604	1	S	Hndl:Tilt:Chute
2	784-5594	1		Cable Bracket
3	784-5401	1	S	Chute Crank Assy.18.0 Lg. - RH
4	784-5149	1	S	Block Ass'y: Joint
5	784-5123	1	S	Chute Crank Bracket
6	749-3072	1		Tube:Supt:Crank
7	747-0931	1	S	Rod:Crk:Chute .380 Dia. x 28.0 Lg.
8	747-0481A	1	/P	Eye Bolt 5/16-18 x 3.0 Lg.
9	746-0903	1	S	Cable:Chute:w/Culp, 66 Lg.
10	746-0902	1	S	Cable:Chute 66 Lg.
11	741-0475	3	S	Plastic Bushing .380 I.D.
12	736-0242	2	/P	Wash:Belvl:.340 I.D. x .872 O.D.
13	736-0231	1	S	Wash:Fl:.344 I.D.:1.125 O.D.:.12
14	736-0140	1	S	Fl. Wash .385 I.D. x .62 O.D. x .06
15	731-1319	1	S	Spcr:Chut:Pivot
16	731-1318	1	S	Chut.:Extended 6" Dia.
17	731-1313B	2	S	Gde:Cable:Chute Tilt
18	731-0849	1	S	6" Dia. Upper Chute
19	726-0100	1	S	Cap:Push x 3/8 Rod
20	720-0232	1	S	Knob:Shift:1.60 O.D. x 1.56
21	720-0201A	1	/P	Knob:Crk:1.00 Dia. x 3.2 Chute
22	715-0138	1	S	Pin:Roll:1/8 O.D.:.63
23	715-0129	1		Spiral Pin - 1/8 Dia. x .812 Lg.
24	714-0507	1	S	Pin:Cot: 3/32 x .750
25	712-0429	1	S	Nut:Hx.: 5/16-18:Gr.C:Lock
26	712-0267	2	S	Hx. Nut:5/16-18:Gr.A:
27	712-0158	2	S	Nut:Lock:5/16-18:Cen.
28	710-0896	1	/P	Scr:1/4-14:. 625: Hx Ind Wsh
29	710-0458	1	/P	Carriage Bolt 5/16-18 X 1.75
30	710-0276	1	/P	Scr:Carr:5/16-18:1.00
31	603-0302	1	S	Asm:Chute Tilt Brkt
32	731-0851A	3	/P	Chute Flange Keeper
33	710-3015	6	/P	Hx. Bolt 1/4-20:.75 Lg.
34	712-3027	6	S	Hx. Flg. Nut 1/4-20
35	710-0262	2	/P	Carr. Bolt 5/16-18:1.50 Gr.2
36	712-3004A	2	/P	Nut-Lock 5/16-18 Gr.5
37	725-0157	1	/P	Cable Tie